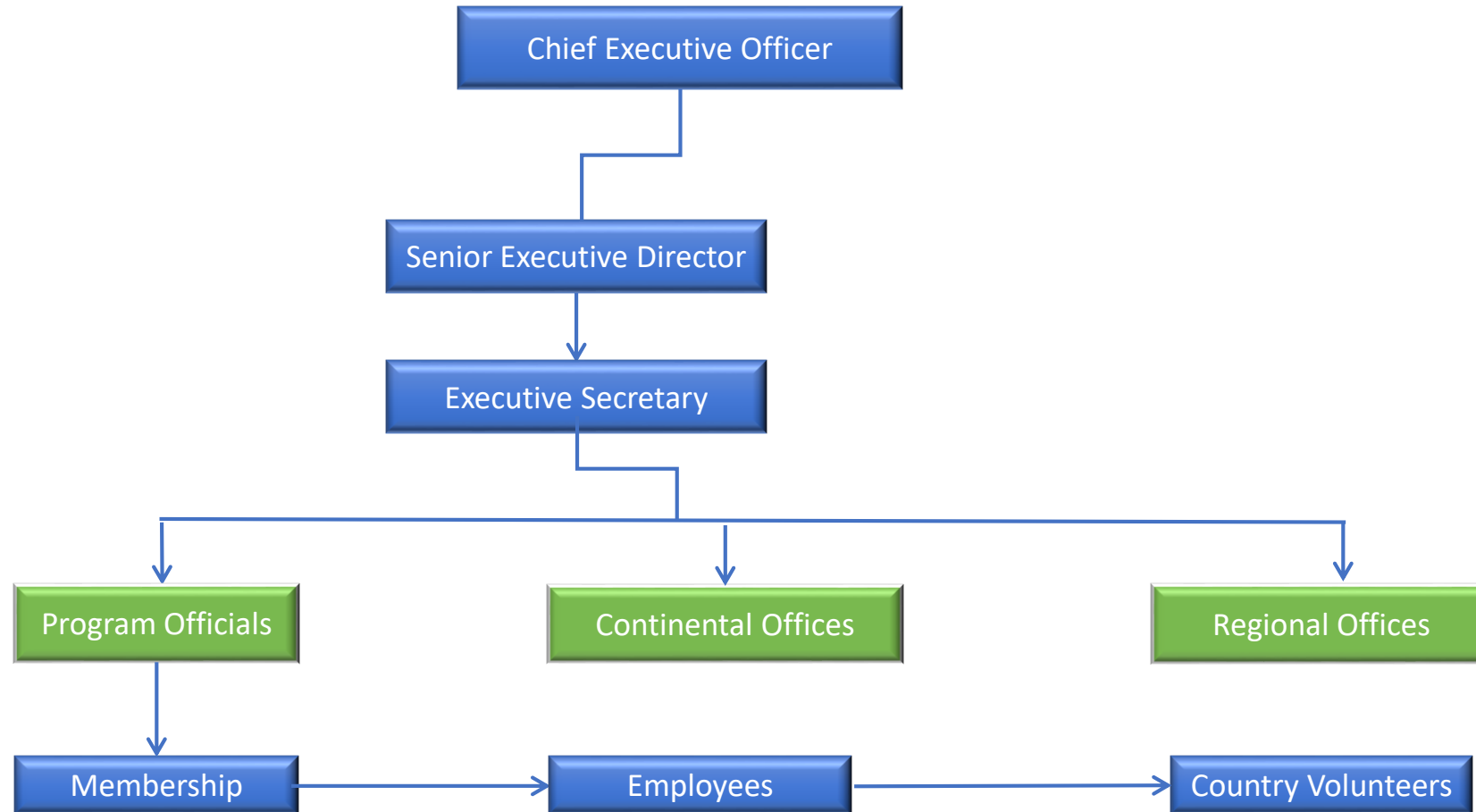


INTERNATIONAL SECRETARIAT / EXECUTIVE BODY



This is an international executive body led by the Chief Executive and deputized by the Senior Executive Director, this body runs and operates FPI on a daily basis and consists of different program officials, working at the FPI HQ as well as Continental and regional offices, it recruits membership and employees makes program decisions and implements agreed on activities across the world working with country chapters in consultation with the IGC structures and the approval of the IEC.